



MONTHLY MEMBERSHIP PROGRESS REPORT

District 3 K

Results as of: 2/17/2014 11:17:44AM

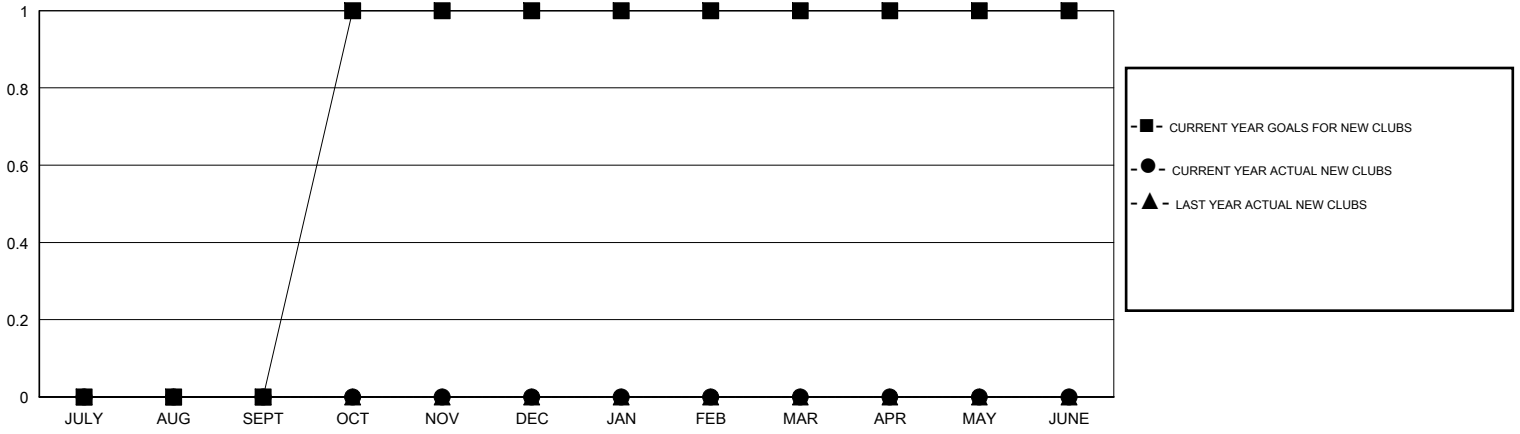
GMT: HAL GRIFFIN

LOCATION OKLAHOMA

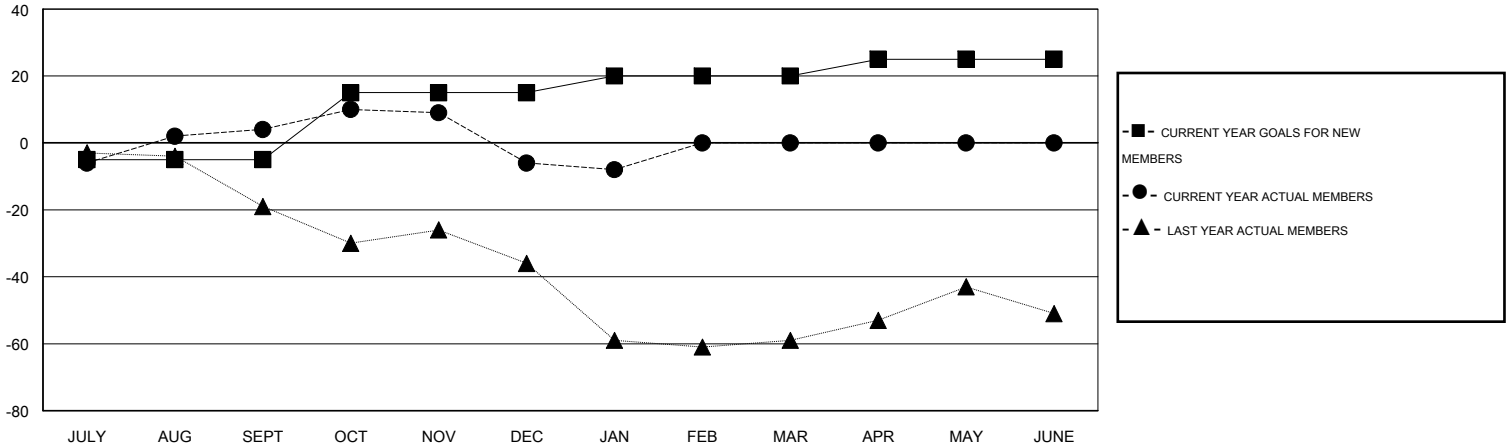
GMT CA 1

Clubs					Members				
RESULTS FOR 2013-2014					RESULTS FOR 2013-2014				
QUARTER	NEW CLUB GOAL	ACTUAL NEW CLUBS	ACTUAL DROPPED CLUBS	ACTUAL NET GAIN/LOSS	QUARTER	NEW MEMBER GOAL	ACTUAL NEW MEMBERS	ACTUAL DROPPED MEMBERS	ACTUAL NET GAIN/LOSS
JULY/AUG/SEPT	0	0	0	0	JULY/AUG/SEPT	-5	30	26	4
OCT/NOV/DEC	1	0	0	0	OCT/NOV/DEC	20	29	39	-10
JAN/FEB/MAR	0	0	0	0	JAN/FEB/MAR	5	11	13	-2
APR/MAY/JUNE	0	0	0	0	APR/MAY/JUNE	5	0	0	0

GOALS AND ACTUAL NEW CLUBS CUMULATIVE



GOALS AND ACTUAL MEMBERS CUMULATIVE



DROPPED CLUBS: 0	22 CLUBS OF 36 ADDED 1 OR MORE NEW MEMBERS	<u>GENDER DISTRIBUTION</u>	
<u>DROPPED MEMBERS</u>		MALE	661 (71.15%)
DECEASED	4	FEMALE	268 (28.85%)
CLUB CANCELLED	0	<u>FAMILY UNIT MEMBERS</u> 80	
OTHER	74	<u>HEAD OF HOUSEHOLD</u> 40	
TOTAL	78	<u>NON-HEAD OF HOUSEHOLD</u> 40	

[CLICK HERE FOR HEALTH ASSESSMENT DATA](#)